

A documented procedure for the suspension, withdrawal or restriction of the scope of certification

Suspension, withdrawal or restriction of the scope of certification

Certification body ISOSTARS EU Stars s.r.o. (hereinafter referred to CO) has established a policy and documented the procedure for suspending, withdrawing or reducing the scope of the certification.

The certification shall be suspended by CO in particular in cases where:

- certified system the customer seriously or permanently failing in meeting the certification requirements, including the requirement on the effectiveness of the management system,
- the customer will not allow the implementation of certified supervisory audits in the desired frequency or
- certified customer voluntarily asked for the suspension.

Cases, when CO the customer may suspend, restrict, or remove the certification and the certification mark are specified in the Contract (C19xx).

In the case of suspension of the certification, it updates the list of customers, and the customer is officially informed that after the period of suspension of the certification is invalid.

If, within the prescribed period (the period of suspension shall not exceed six months) is not to restore the certification, the withdrawal or restriction of the scope of certification. If the period of suspension is longer than 4 months, before restoring the certification must perform an extraordinary supervisory audit (possibly in an abbreviated form, in order to demonstrate the functionality of the customer and verify the legitimacy of its validity — see 9.5.2 ISO/IEC 17021.

In the event that are detected during supervisory audits disagreement 2. category, and the client responds to the remedy proposal within 14 days from the last day of the audit, the certification will also be suspended for a period before forward axle of disagreements, which subsequently approved by the lead auditor. Then he will be once again restored to the certification.

Leadership CO limits the range where the certification is not met the criteria. The customer is informed about this letter and the Exchange certificate with a new, modified, scope.

All changes related to the suspension, withdrawal or restriction of the scope of certification are listed in the list of customers.

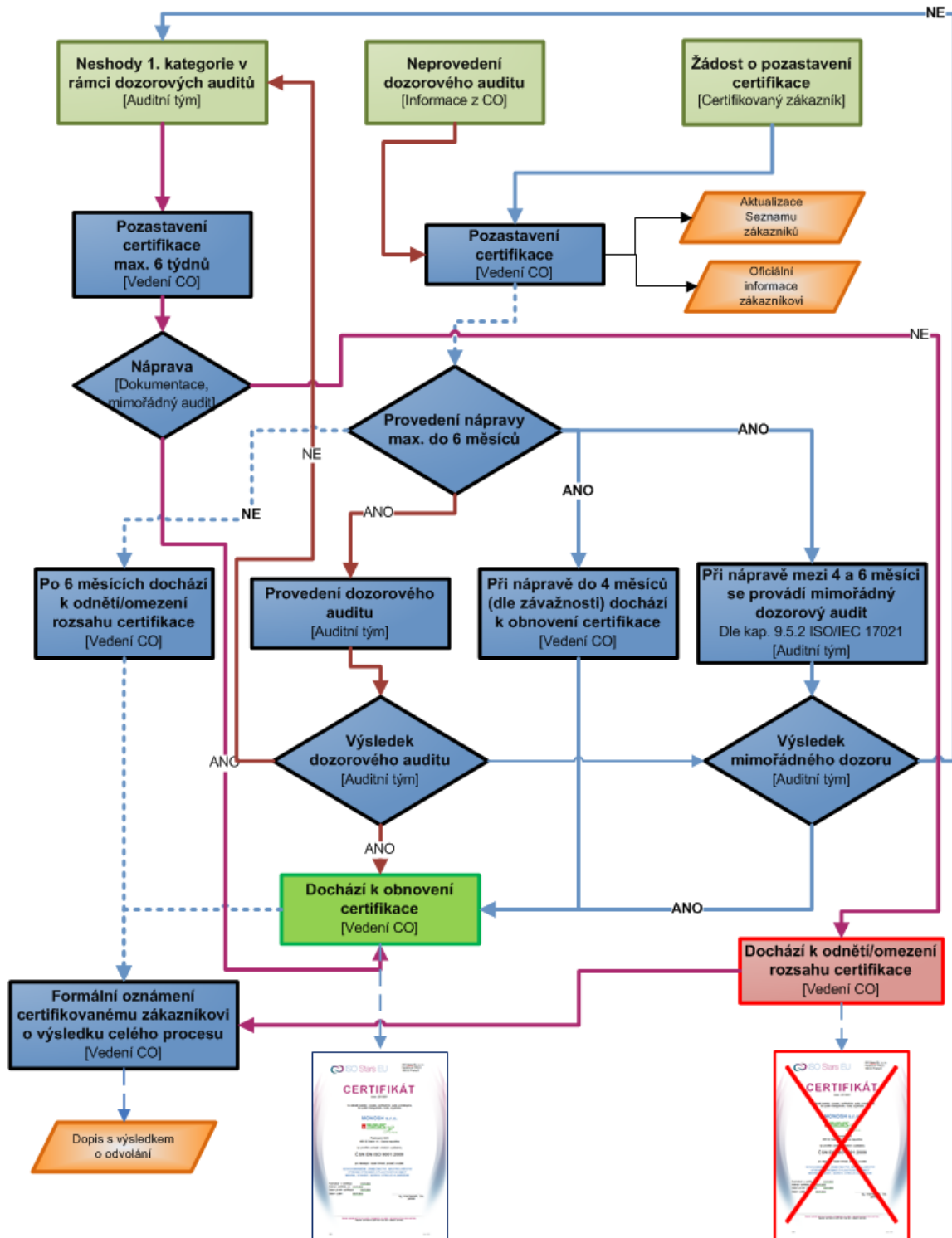
Ing. Milan Bednařík, CSc.
Managing Director

Annex:

Annex No 1-diagram of the procedure for the suspension, withdrawal or restriction of the scope of certification:

Annex No 1

Assay procedure for the suspension, withdrawal or restriction of the scope of certification:



- ← Postup v případě neshod 1. kategorie
- ← Postup v případě pozastavení certifikace na žádost klienta
- ← Postup v případě neprovedení dozorového auditu
- ← Postup společný pro více vstupů